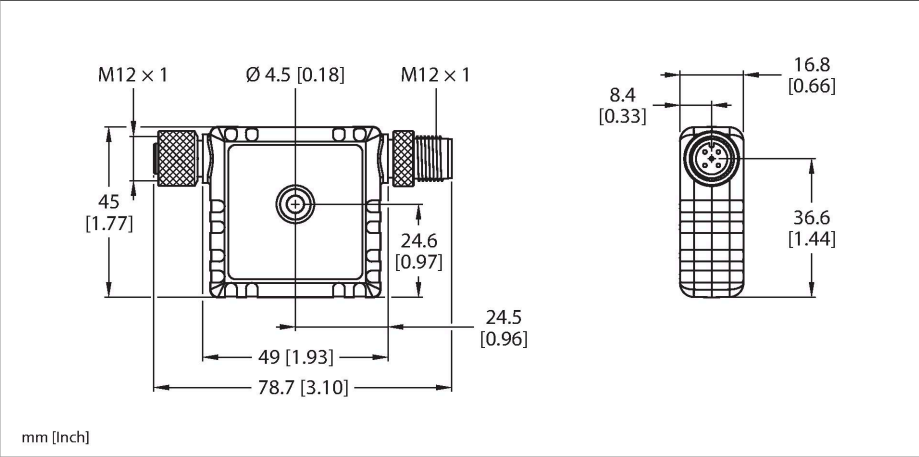


R45C-PF-IQ
Converter – PulsePro
Current to PFM



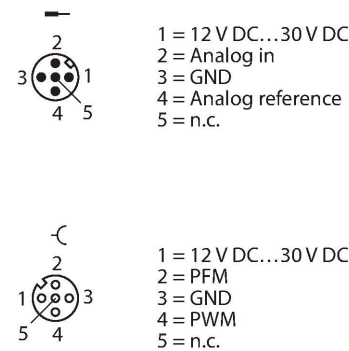
Technical data

Type	R45C-PF-IQ
ID	3815046
Wireless data	
Device type	Converter
I/O data	
Input type	4...20 mA
Output type	100...5000 Hz, frequency
Communication protocol	BannerBus (Pro Editor compatible)
Electrical data	
runs with battery	nein
Tests/approvals	
Approvals	CE UKCA cULus

Features

- Direct connection to an analog sensor due to compact design
- Operating voltage: 18...30 VDC
- Input: current, 4...20 mA
- Output: PFM, 100...600 Hz
- Protection class: IP67
- Status LEDs for signal strength and signal loss
- Operating voltage: 12...30 VDC
- Input: analog, 4...20 mA
- Output: PFM (Pulse Frequency Modulation)
- Converts the current signal into a 100...600-Hz PFM signal

Wiring diagram



Functional principle

Sensors with digital or analog outputs and a serial interface can now be used to communicate via IO-Link and Modbus RTU to provide the data required for predictive maintenance and operational optimization.

Components in the Snap Signal product series help to make the data from field devices accessible in the desired format. The S15C and R45C are suitable for in-line mounting and convert a large number of signals into IO-Link process data or Modbus registers. IO hubs and IO-Link masters in the R90C and R95C product series round off the range. All components meet industry standards in terms of protection class, connection and durability.

They are easy to integrate into existing systems and the DXM network controller facilitates transferring the data to the control system or the cloud.